



SOLATUBE. Premium universal flashing



Parts list

	Qty
Premium universal roof tile flashing (for use with all plain, profiled & slate roof tiles)	1
Flashing insulator	1
High Tack sealant	1

First complete the Solatube 160DS & 290DS installation instructions Steps 1- 4

Step A – affix the flashing insulator

Align the flashing insulator to the underside of the roof flashing, matching the centres, and apply the aluminium tape provided firmly along each outside edge of the flashing insulator to securely fix the flashing insulator to the flashing (**diagram 1**). Later, when the top tube is inserted into the flashing up-stand, the flashing insulator will be stretched around the tube, creating a seal.

Step B – remove the roof tiles

On the roof, locate the nail/wire probe and remove sufficient tiles to allow you to place the roof flashing onto the roof battens. Leave sufficient tiles below to allow the flashing to overlap adequately onto these tiles. Centre the top tube assembly over the nail/wire probe and mark around the outside circumference onto the felt.

Step C – cut the roof felt

Place the top tube assembly safely and securely to one side. Neatly cut the roof felt and, if necessary, any obstructing batten(s) across the diameter of the marked circle. Replace the flashing over the hole and temporarily insert the top tube assembly into the up-stand and through the flashing insulator and felt to check clearance and to rotate the angle the top tube assembly towards the bottom tube assembly in the ceiling, if required.

Step D – position and seal the sides of the roof flashing

Fold the top edge of the flashing over the highest exposed roof batten to temporarily anchor the flashing in position, making sure the centre of the flashing up-stand lines up with the opening in the roof felt.

For flat tiles, such as slate, run a bead of sealant down each side of the flashing when re-affixing the tiles to either side of the up-stand. For profiled tiles, the sides can be folded upwards to provide a raised side (**diagram 2**). Folds or sealant should not be visible once tiles are replaced.

Step E – seal the lower edge of the roof flashing

Apply a continuous bead of sealant on the tiles beneath the lower edge and the sides of the roof flashing and then press the flashing material firmly down to seal the flashing to the tiles below (**diagram 3**).

Replace and secure the removed tiles, ensuring a minimum 40mm gap is left behind the up-stand to allow the top tube assembly, dome ring and dome to be inserted into the flashing up-stand – note, you may need to trim the tiles to achieve this. Mould the top of the flashing as necessary to fit the underside shape of the tiles. Ensure all tiles are firmly in position and the roof is fully watertight.

Diagram 1



Diagram 2

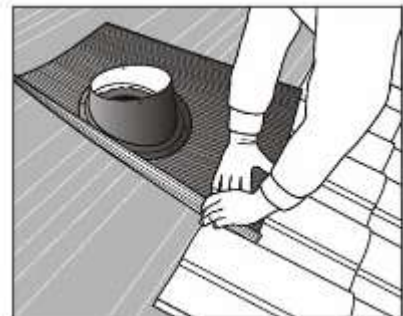
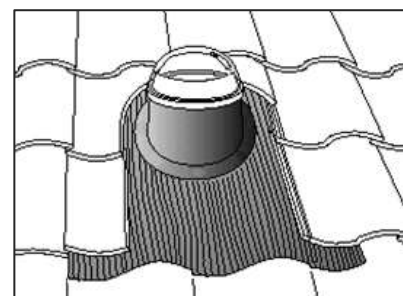


Diagram 3



Apply High Tack sealant on the tiles that will be covered by the flashing material press the flashing material firmly to seal

Please now continue to Step 6 of the Solatube 160DS & 290DS installation instructions